

Grant / Project Name	Grantor	Treatment Funds Awarded*	Activities/ Treatments to date	Remaining Treatment Funds*	Status	Exp Date
Hog & Sheep Fire Forest Restoration - CCI #619	CALFIRE	\$4,999,855.30	Biomass site prep, herbicide purchase/application, tree planting for first two rounds of funding. Project is completed.	\$0	Operations complete. Close out work ongoing: Final shapes, monitoring, cost match reconciliation with landowner.	3/31/2025
Shingletown WUI Fuels Treatments - CCI #110	CALFIRE	\$8,978,870.00	Biomass utilization 100% complete, equipment purchase 100% complete, community Treatments 90% complete, mastication treatments 97% complete, emergent brush treatments 100% complete,	\$173,000	Community biomass treatments ongoing. Additional Mastication Ongoing. Community hand thinning / defensible space ongoing. On Schedule to complete 2/2025 (sooner if weather cooperates)	3/15/2025
Dyer Mountain WUI Fuels Treatment - CCI #0102	CALFIRE	\$5,727,260.00	Community treatments 100% complete. Emergent brush treatments 100% complete. Biomass utilization treatments 100% complete. Additional mastication acres added, 110% complete.	\$0	Operations complete. Close out work ongoing: Final shapes, monitoring, close out report.	3/15/2025
Whitmore Forest and Watershed Restoration - CCI #611	CALFIRE	\$4,999,989.12	Mastication 100% complete. Biomass treatments 90% complete. Emergent Brush treatments 100% complete.	\$190,000	Biomass chipping ongoing. Remaining treatments completed. On Schedule to complete 2/2025	3/31/2025
Eastside Communities SPA #018 / Lone Spring SNC #1275	SNC/ USFS	\$1,291,202.00	Draft EA complete. All resource specialist surveys complete for 2024. Objection period tentative start date in February.	\$350,000	Arc surveys and wildlife surveys complete for 2024. Awaiting PNF to advance project EA. Applied for implementation funding through FH CCI 2024/25. Meeting with PNF to determine next priority for surveys.	3/31/2031

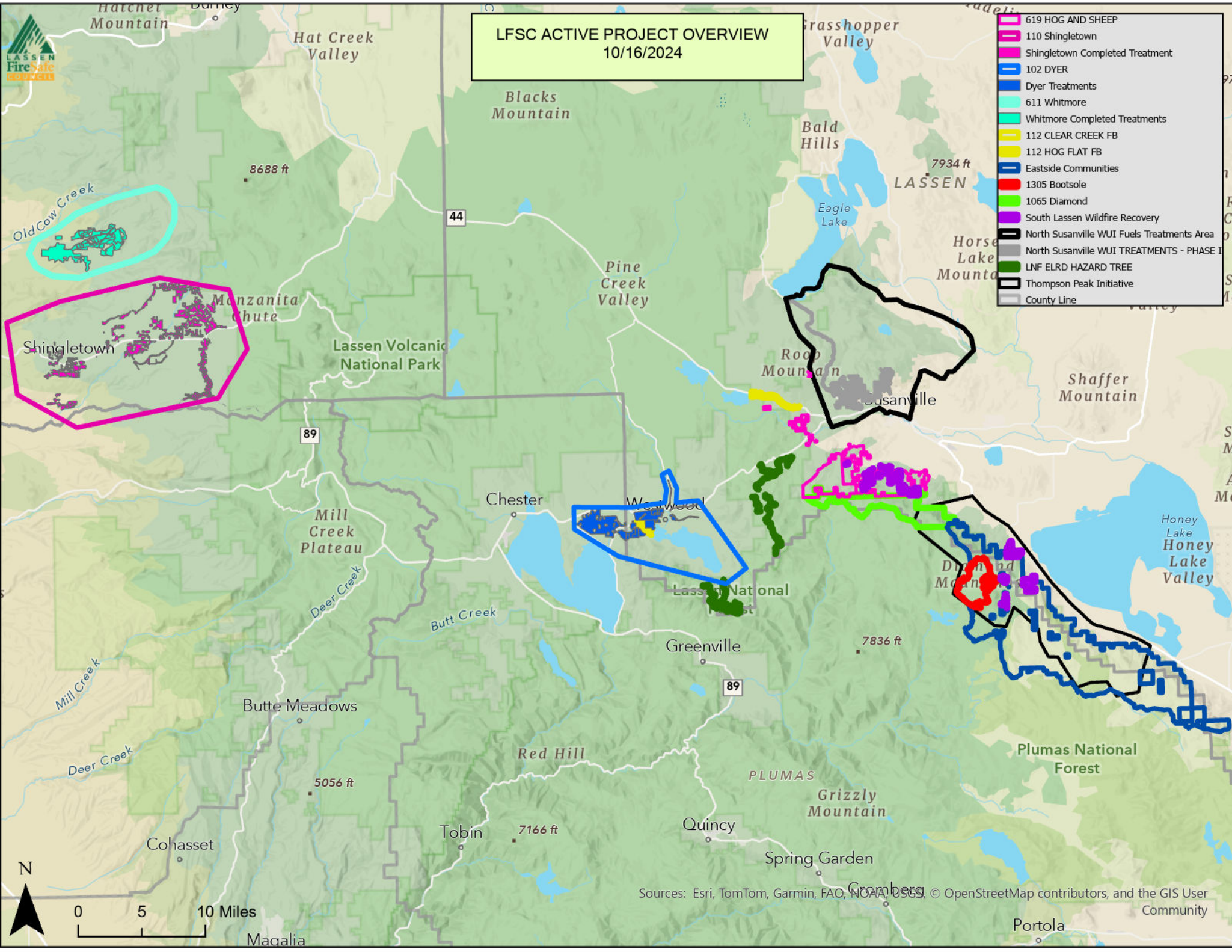
* Does not include cost match information

Project	Grantor	Treatment Funds Awarded*	Activities/ Treatments to date	Remaining Treatment Funds*	Status	Exp. Date
Bootssole-SNC #1305	SNC	\$3,671,725.00	SPA #1, #2,#3 executed with PNF Beckwourth District, Timber Marking/cruising, Layout 100% complete, Mastication 100% completed, hand thinning treatments 100% completed, Biomass 100% completed. Project used to leverage more treatments in Bootssole Salvage and Cradle Valley.	\$63,000	Project extended to leverage SNC funds for more federal acres on cradle valley. Additional hand thinning acres added in EEZ's. Biomass Treatments completed 12/2024.	1/1/2026
Diamond Mountain - SNC #1065	SNC	\$882,087.00	Mastication/ pruning 100% complete. Aspen exclusion treatments 100% complete. Pile burning 100% complete. Impacted by sheep fire.	\$65,000	Available treatments complete. Will assess and prioritize need for remaining funds.	1/1/2026
Honey Lake Valley RCD/LFSC - SPA	NA	NA	MOU - SPA between organizations to assist HLVRCDC with biomass utilization, site prep, and tree planting. Biomass utilization complete on several landowners. Tree planting complete on several landowners.	NA	Biomass utilization complete. Planting complete for 2024. Herbicide completed for 2024. Reforestation planned for Spring of 2025.	NA
California Fire Safe Council County Coordinator	CFSC	\$94,827.80	2024 program complete.	\$0	Assessing 2025 project	12/31/2024
USFS Cradle Valley / Bootssole Dixie Fire Salvage	USFS	2,600,000	Spa complete. Layout complete.	1,700,000	Biomass Chipping bids close today (1/15). Planning for site prep. GOAL IS SUMMER 2025 completion.	8/31/2026
Lassen County-Wide Defensible Space Program	CFSC	500,000	Contract awarded for implementation. Deliverables 100% complete. Additional properties added to complete project and exhaust grant funds on treatments.	0	Complete 12/2024. Closeout ongoing. Assessing applying for CWDG for 2025-2027.	12/31/2024

* Does not include cost match information

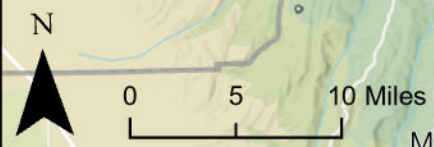
Project	Grantor	Treatment Funds Awarded*	Activities/ Treatments to date	Remaining Treatment Funds*	Status	Exp. Date
Lassen County Wide Assessment	SNC	\$275,242.00	Agreement executed 7/2024.	\$275,242	Bids received from 4 consultants. Contract to be awarded within next week.	10/31/2027
South Lassen Wildfire Recovery Project	CALFIRE	\$6,469,424.33	Agreement executed. CEQA cleared.	\$6,469,424.33	Bids for Biomass and Mastication close today (1/15). Contract award expected in next 2 weeks. Implementation to begin late January / early February.	3/31/2030
North Susanville WUI Fuels Treatments	CALFIRE	\$2,999,924.32	Agreement signed by LFSC. CEQA cleared	\$2,999,924	1/15/2025 Bids for Biomass and Mastication close today (1/15). Contract award expected in next 2 weeks. Implementation to begin late January / early February.	3/15/2030
LFSC LNF Dixie Fire Hazard Tree Project	CALFIRE	2,999,987.85	Agreement signed by LFSC. Working on CEQA	2,999,987.85	Plan for 2025 is USFS layout and surveys to clear area. Contracting in fall.	3/15/2030

* Does not include cost match information



LFSC ACTIVE PROJECT OVERVIEW
10/16/2024

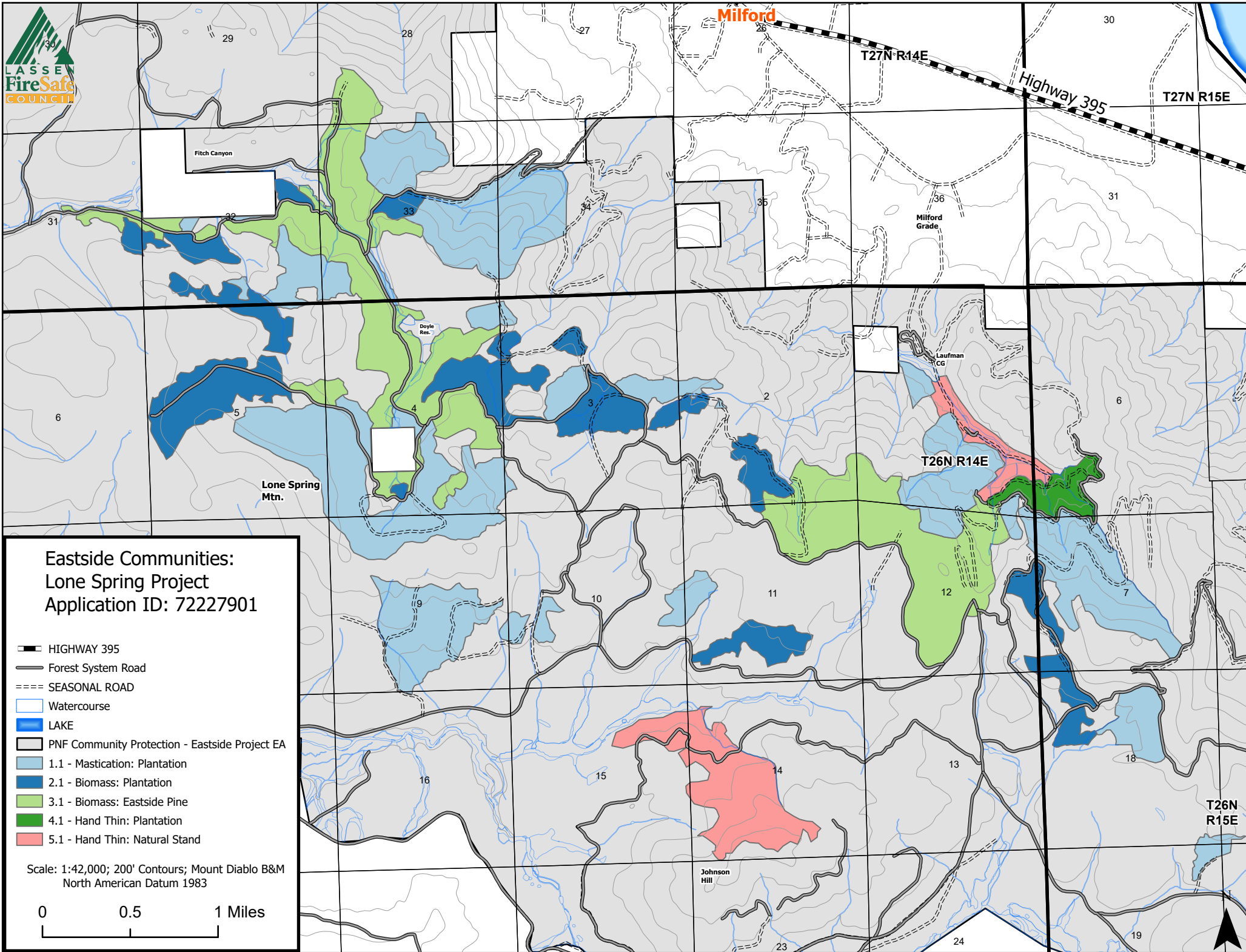
- ▬ 619 HOG AND SHEEP
- ▬ 110 Shingletown
- ▬ Shingletown Completed Treatment
- ▬ 102 DYER
- ▬ Dyer Treatments
- ▬ 611 Whitmore
- ▬ Whitmore Completed Treatments
- ▬ 112 CLEAR CREEK FB
- ▬ 112 HOG FLAT FB
- ▬ Eastside Communities
- ▬ 1305 Bootssole
- ▬ 1065 Diamond
- ▬ South Lassen Wildfire Recovery
- ▭ North Susanville WUI Fuels Treatments Area
- ▭ North Susanville WUI TREATMENTS - PHASE I
- ▬ LNF ELRD HAZARD TREE
- ▭ Thompson Peak Initiative
- ▭ County Line



Sources: Esri, TomTom, Garmin, FAO, NOAA, USGS © OpenStreetMap contributors, and the GIS User Community

Planned / Proposed Projects 11/20/2024

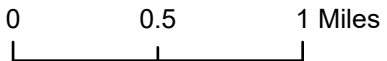
Project	Treatment Cost / Funds Applied for	Grantor / Program	Planned Project	Status
Plateau / Shingletown Phase II	TBD	TBD	Work with SPI and non industrial landowners to continue to identify priority landscape level fuels reduction areas in WUI. Shingletown/Viola/ potential community treatments.	Potential project meetings ongoing. Engaging potential project partners CEQA clearance for areas not included in current project will begin soon.
Cow Creek Forest and Watershed Restoration Project.	\$6,500,000	CALFIRE FH	Work with SPI to continue landscape level fuels reduction and forest health treatments in area between communities of Whitmore and Shingletown.	WSRCD is CEQA lead. 24/25 FH grant submitted.
Manton WUI Fuels Treatments	TBD	TBD	Work with Manton Fire Safe Council to continue work that began in 2024. Ponderosa Fire on SPI and large landowners with heavy fuels priority for treatment	Manton FSC and LFSC worked together to implement in 2024. All parties want to expand project. Tehama RCD, Western Shasta RCD and CALFIRE will be brought into planning sessions in November.
South Susanville WUI Treatments	TBD	TBD	Dead/ Dying/ Hazard Tree removal, biomass fuels treatments, mastication, herbicide.	Approached by several landowners about separate projects. LFSC would like to combine into a larger landscape level project. CEQA CLEARANCE Planned fall 2024.
Eastside Communities: Lone Spring Project - Phase 1	4,500,000	CALFIRE FH	Hazardous fuels reduction/ FOREST HEALTH in Lonespring project area of Eastside Communities	Arch surveys and Wildlife surveys completed for Lonespring area in 2024. 24/25 FH APPLICATION Submitted. For stewardship work.
Big Valley Mountain Phase II	TBD	TBD	Work with CALFIRE and large landowners to identify next areas of treatment.	Project delineation and CEQA.
Harvey Country Forest Health Project	TBD	TBD	Work with large landowners to continue landscape level fuels reduction and forest health treatments in-between highway 44 and Eagle Lake	Project delineation and CEQA.
Highway 44 Fuelbreaks	TBD	TBD	Work with large landowners and USFS to establish new and maintain existing fuelbreaks and continue landscape level fuels reduction and forest health treatments in areas along highway 44 corridor.	Potential project meetings ongoing. Engaging potential project partners CEQA clearance for areas not included in current project will begin soon.
D-Space 25-27	\$2,000,000	CWDG	Build on success of Defensible space program and add dead/dying hazard tree removal component for senior/ disabled / disadvantaged communities.	Apply for funding, February 2025.
LNF ACER STEWARDSHIP	3,000,000	CALFIRE FH	Partnership project between LFSC and ELRD. ELRD has federal funding that can be used as a cost match (joint Chiefs)	24/25 FH project application submitted.



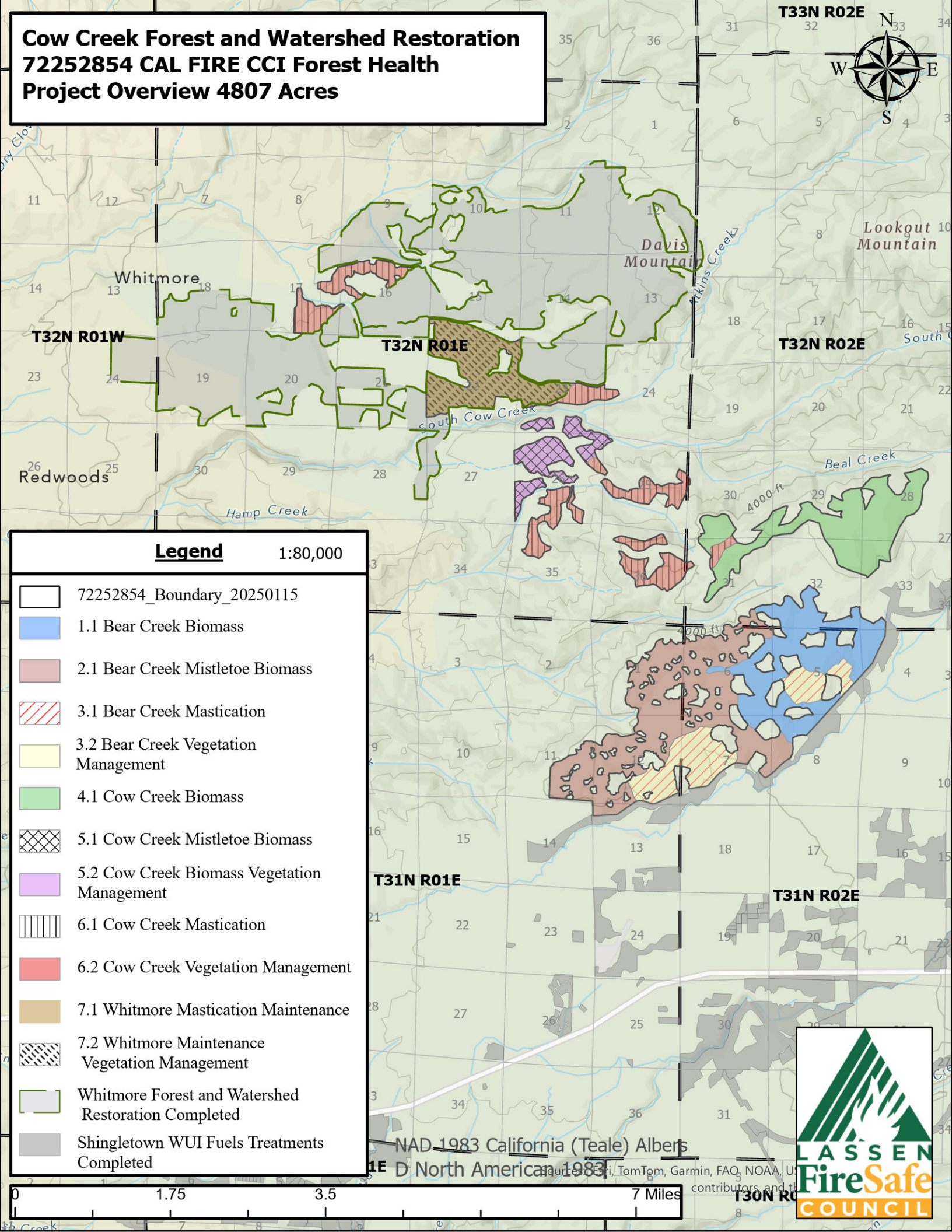
**Eastside Communities:
Lone Spring Project
Application ID: 72227901**

- HIGHWAY 395
- Forest System Road
- SEASONAL ROAD
- Watercourse
- LAKE
- PNF Community Protection - Eastside Project EA
- 1.1 - Mastication: Plantation
- 2.1 - Biomass: Plantation
- 3.1 - Biomass: Eastside Pine
- 4.1 - Hand Thin: Plantation
- 5.1 - Hand Thin: Natural Stand










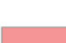




Scale: 1:42,000; 200' Contours; Mount Diablo B&M
North American Datum 1983

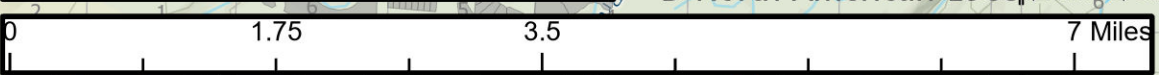


Cow Creek Forest and Watershed Restoration 72252854 CAL FIRE CCI Forest Health Project Overview 4807 Acres



Legend 1:80,000

-  72252854_Boundary_20250115
-  1.1 Bear Creek Biomass
-  2.1 Bear Creek Mistletoe Biomass
-  3.1 Bear Creek Mastication
-  3.2 Bear Creek Vegetation Management
-  4.1 Cow Creek Biomass
-  5.1 Cow Creek Mistletoe Biomass
-  5.2 Cow Creek Biomass Vegetation Management
-  6.1 Cow Creek Mastication
-  6.2 Cow Creek Vegetation Management
-  7.1 Whitmore Mastication Maintenance
-  7.2 Whitmore Maintenance Vegetation Management
-  Whitmore Forest and Watershed Restoration Completed
-  Shingletown WUI Fuels Treatments Completed

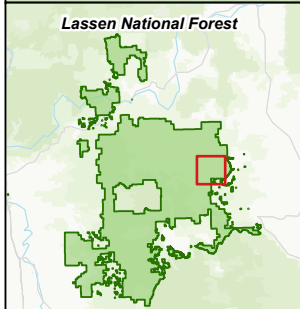
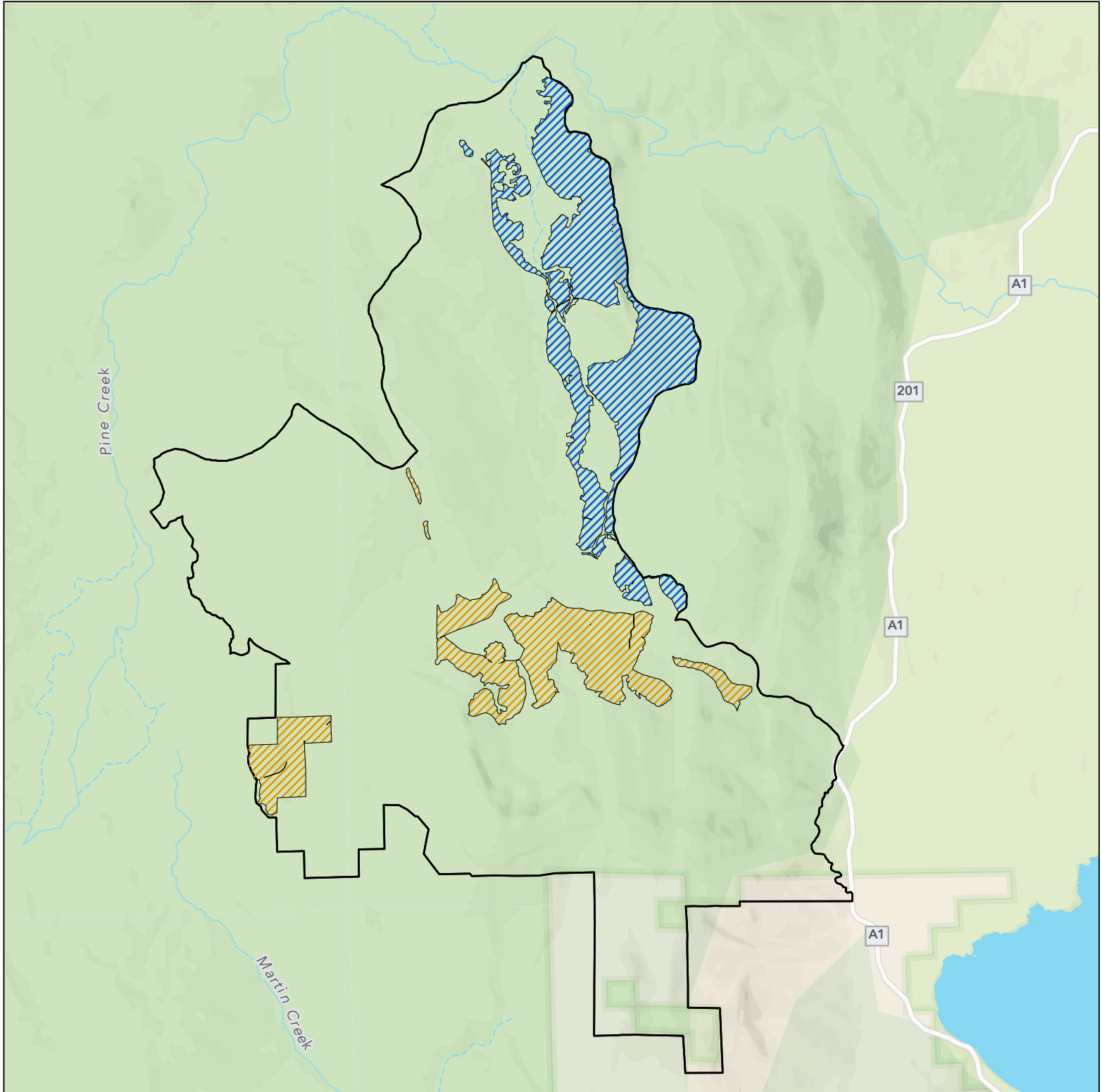


NAD 1983 California (Teale) Albers
 UTM Zone 10N North American 1983

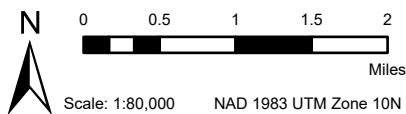


Source: Esri, TomTom, Garmin, FAO, NOAA, U.S. Geological Survey, and others

Acer Vegetation Management Project Sale Areas



- Acer Vegetation Management Project Boundary
- Billy Goat Sale Area
- Speed Goat Sale Area



NAME	Acres
Billy Goat Sale Area	1173
Speed Goat Sale Area	1656

The Forest Service uses the most current and complete data available. GIS data and product accuracy may vary. They may be developed from sources of differing accuracy, accurate only at certain scales, based on modeling or interpretation, incomplete while being created or revised, etc. Using GIS products for purposes other than those for which they were created, may yield inaccurate or misleading results. The Forest Service reserves the right to correct, update, modify, or replace GIS products without notification. The Forest Service will not be liable for any activity involving this information.